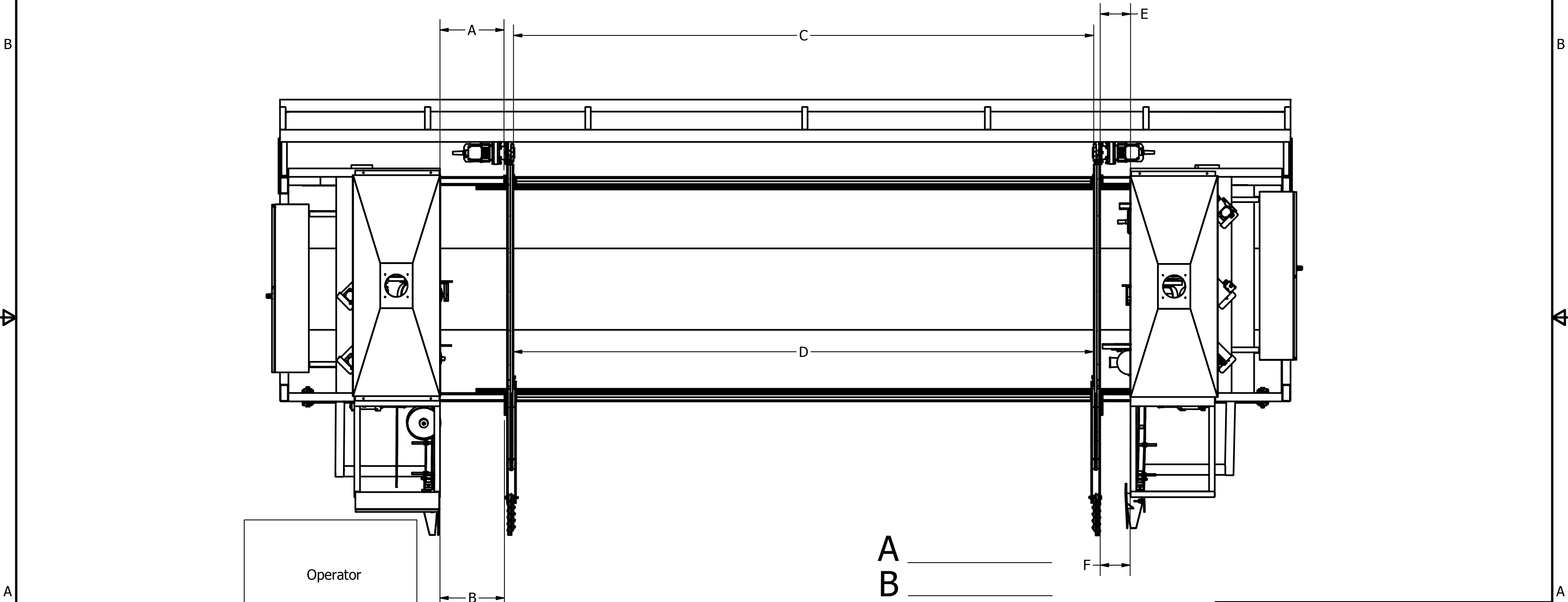


Squaring Retro C

Move the carriage close so that C and D dimensions are easy to get accurate.
 These must be very accurate measure from the 1" mark if necessary and make sure the same surface is chosen on the front and back of the saw.



Operator

If $D > C$ The lumber will get shorter
 If $C > D$ The lumber will get longer
 AB and EF will create bevels on cuts if they are not square.

- A _____
- B _____
- C _____
- D _____
- E _____
- F _____

Davy		2/7/2019
TITLE		Project:
Square Retro C		
SIZE	DWG NO	REV
13X19	Retro C Squaring	
SCALE	1 / 30	SHEET 2 OF 2

Printed by: .on:at